

Heraeus

Heraeus Kulzer Adhesives



**Your first choice for effective bonding
and desensitisation**

Product information



Adhesion without postoperative complaints for every generation

Did you know that every fifth adult has exposed tooth necks and sensitive teeth?¹ Did you also know that many patients suffer from postoperative hypersensitivities after getting a filling done?

Did you know, that it is possible to do something against it?

Heraeus Kulzer took these problems into consideration in its adhesive systems and included an additional desensitisation effect.

This way, you can protect your patients against postoperative hypersensitivities with every adhesive type, in every adhesive step.

And which adhesive type are you?

Do you use self-etching, single-bottle or multi-bottle adhesive systems? Irrespective of the adhesive type you are, you will always find the right adhesive from Heraeus Kulzer with the additional desensitisation effect – for all indications and for all requirements.

¹ Petersson LG, Kambara M. Remineralisation study of artificial root caries lesions after fluoride treatment. An in vitro study using electric caries monitor and transversal microradiography. *Gerodontology* 2004; 21: 85–92

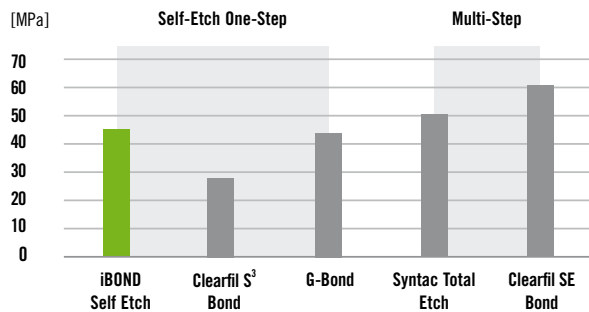
iBOND® Self Etch

The “all-in-one” solution

iBOND Self Etch is a self-etching, all-in-one adhesive so proven, so easy to use, and so advanced that it confidently covers all demands of a bonding system.

- Proven in numerous studies worldwide.
- Based on Heraeus Kulzer long term bonding experience.
- High bond strength to dentin and enamel lead to an improved marginal sealing.
- Etching, priming, bonding and desensitising with one single coat for easy, fast and convenient application.
- For bonding direct restorations, indirect restorations using a light-curing luting cement and for the treatment of hypersensitive dental regions.

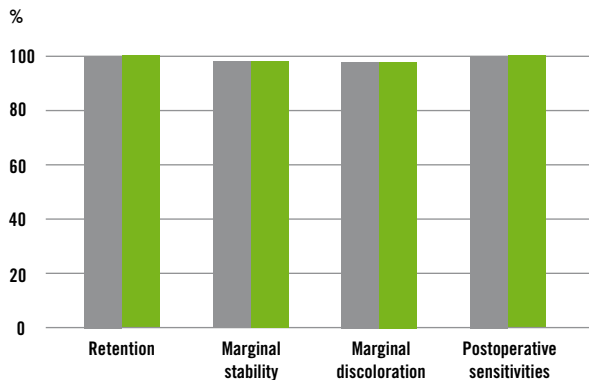
µ-TBS to dentin in class I cavities after 24 hours water storage



µ-TBS = Micro Tensile Bond Strength

Source: R. Frankenberger, University of Erlangen, Germany 2006. Unpublished. Data on file.

Alpha-ratings in class V after 3 months*



■ Clearfil SE Bond ■ iBOND Self Etch

*70 evaluated restorations.

Source: K.-J. Soderholm, University of Gainesville, USA 2007. Unpublished. Data on file.

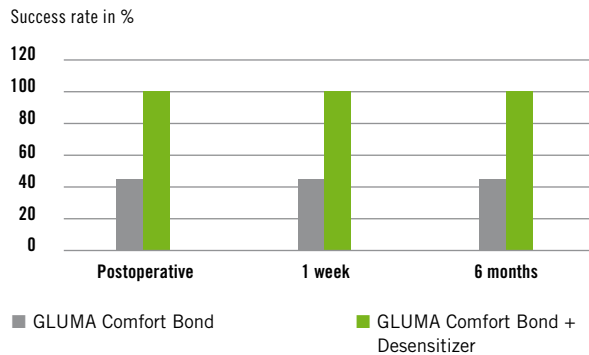
GLUMA® Comfort® Bond + Desensitizer

The “3-in-1” solution

The patented chemistry of GLUMA Comfort Bond + Desensitizer combines the excellent adhesive bonding with the desensitising action of GLUMA Desensitizer. Priming, bonding and desensitising in a single step.

- The total-etch adhesive in one bottle for priming, bonding and desensitising.
- Simple application without prior mixing.
- Suitable both for moist and dry bonding techniques.
- For bonding direct composite and compomer restorations, as well as indirect restorations (such as ceramic veneers, ceramic crowns, inlays and onlays) using light-curing or dual-curing cements.

Success rates for avoiding hypersensitivities



Source: G. Dondi dall'Orologio, Bologna; W. J. Finger, Cologne; A. Lone, Abu Dhabi 2004.

GLUMA® Solid Bond

The “classical solution”

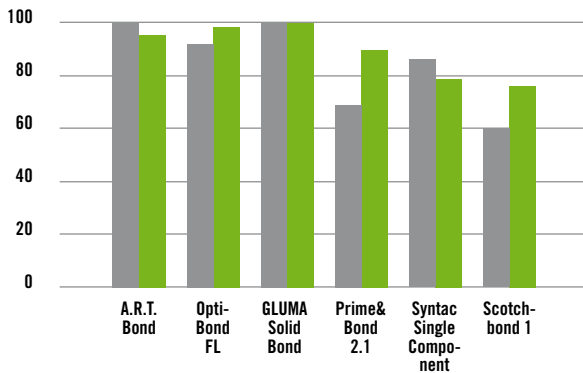
The perfectly matched dual component system of GLUMA Solid Bond offers comfortable handling and best bonding results.

GLUMA Desensitizer can be applied before the application of GLUMA Solid Bond to effectively reduce unwanted hypersensitivities.

- The total-etch multi-bottle adhesive with 25% filler loading.
- GLUMA Solid Bond is radiopaque and thus significantly simplifies X-ray diagnostics.
- For bonding of all direct and indirect restorations.
- Improves adhesion of fissure sealers to enamel and dentin.
- For sealing exposed tooth necks.

Gap-free restoration margins using moist and dry bonding techniques

Gap-free margins in %



- “Gap-free margin” for dry bonding %
- “Gap-free margin” for moist bonding %

Source: B. Haller, A. Fritzenschaft, University of Ulm, Germany 1999.

GLUMA® Desensitizer

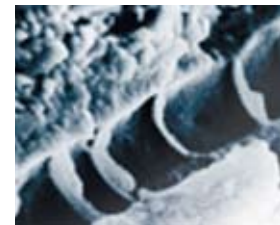
The “Five-Star-Award” solution

GLUMA Desensitizer is in practice for over 10 years and has been used to reduce hypersensitivities in over 45 million restorations worldwide.

- Initial effect, immediate pain reduction.
- High effectiveness with easy handling: no mixing, curing or repeated application necessary.
- More effective than pure fluoridation.
- Also used to good effect in combination with bonding agents.
- GLUMA Desensitizer straightens collapsed collagen fibres² and therefore can improve the adhesive strength of many adhesives³.
- Reduces hypersensitivities of exposed tooth necks not requiring restoration.
- For reducing or preventing postoperative sensitivities following preparation of teeth for direct or indirect restorations.



Dentin tubuli before the application of GLUMA Desensitizer



Sealing of dentin tubuli by GLUMA Desensitizer

GLUMA Desensitizer penetrates up to 200 µm into the exposed dentin tubuli where it forms multiple layers of protein septa thereby preventing intratubular movement following osmotic changes.






² H. Heyman, Dentistry Today, March 2000

³ CRA Newsletter, October 2002



Desensitising bonding agents

Product outline

Etching	Priming	Bonding	Desensitising	
■	■	■	■	 <p>iBOND® Self Etch Self-etching 1-bottle adhesive</p> <ul style="list-style-type: none"> ■ Bottle Assortment (4 ml bottle, accessories) 66033607 ■ Bottle Value Pack (3 x 4 ml bottles, accessories) 66033603 ■ SingleDose Assortment (50 single doses, accessories) 66033604 ■ SingleDose Value Pack (100 single doses, accessories) 66033605
	■	■	■	 <p>GLUMA® Comfort® Bond + Desensitizer Total-etch 1-bottle adhesive</p> <ul style="list-style-type: none"> ■ Bottle Assortment (1 bottle à 4 ml, accessories) 66001710 ■ Bottle Value Pack (3 bottles à 4 ml, accessories) 66018222 ■ Single Dose Assortment (40 pack) (40 single doses, accessories) 66005664
	■	■		 <p>GLUMA® Solid Bond Total-etch multi-bottle adhesive</p> <ul style="list-style-type: none"> ■ Bottle Assortment 66000132 (one bottle each of primer and sealer à 4 ml, 2 syringes Gluma Etch 20 gel à 2.5 ml, accessories) ■ Primer (1 bottle à 4 ml) 66000133 ■ Sealer (1 bottle à 4 ml) 66000134
■				 <p>GLUMA® Etch Phosphoric acid</p> <ul style="list-style-type: none"> ■ GLUMA Etch 20 Gel (2 syringes à 2.5 ml, 25 needles) 66000131 ■ GLUMA Etch 35 Fluid (1 bottle à 5 ml) 66000129 ■ GLUMA Etch 35 Gel (2 syringes à 2.5 ml, 25 needles) 66000129
			■	 <p>GLUMA® Desensitizer Against cervical and postoperative hypersensitivities</p> <ul style="list-style-type: none"> ■ Bottle Assortment (1 bottle à 5 ml) 65872654 ■ Bottle Value Pack (3 bottles à 5 ml, accessories) 66018221 ■ Single Dose Assortment (40 pack) (40 single doses, accessories) 66001854

Contact in Germany

Heraeus Kulzer GmbH

Grüner Weg 11
63450 Hanau
Phone +49 (0) 6181 355 444
Fax +49 (0) 6181 353 461
info.dent@heraeus.com
www.heraeus-kulzer.de

Contact in the United Kingdom

Heraeus Kulzer Ltd.

Heraeus House, Albert Road
Northbrook Street, Newbury
Berkshire, RG14 1DL
Phone +44 (0) 1635 30500
Fax +44 (0) 1635 30606
Mail: sales@kulzer.uk
Website: www.heraeus-kulzer.com

Contact in Australia

Heraeus Kulzer Australia Pty. Ltd.

Locked Bag 750
Roseville NSW 2069
Phone +61 29 417 8411
Fax +61 29 417 5093
Mail: sales@kulzer.com.au
Website: www.kulzer.com.au